

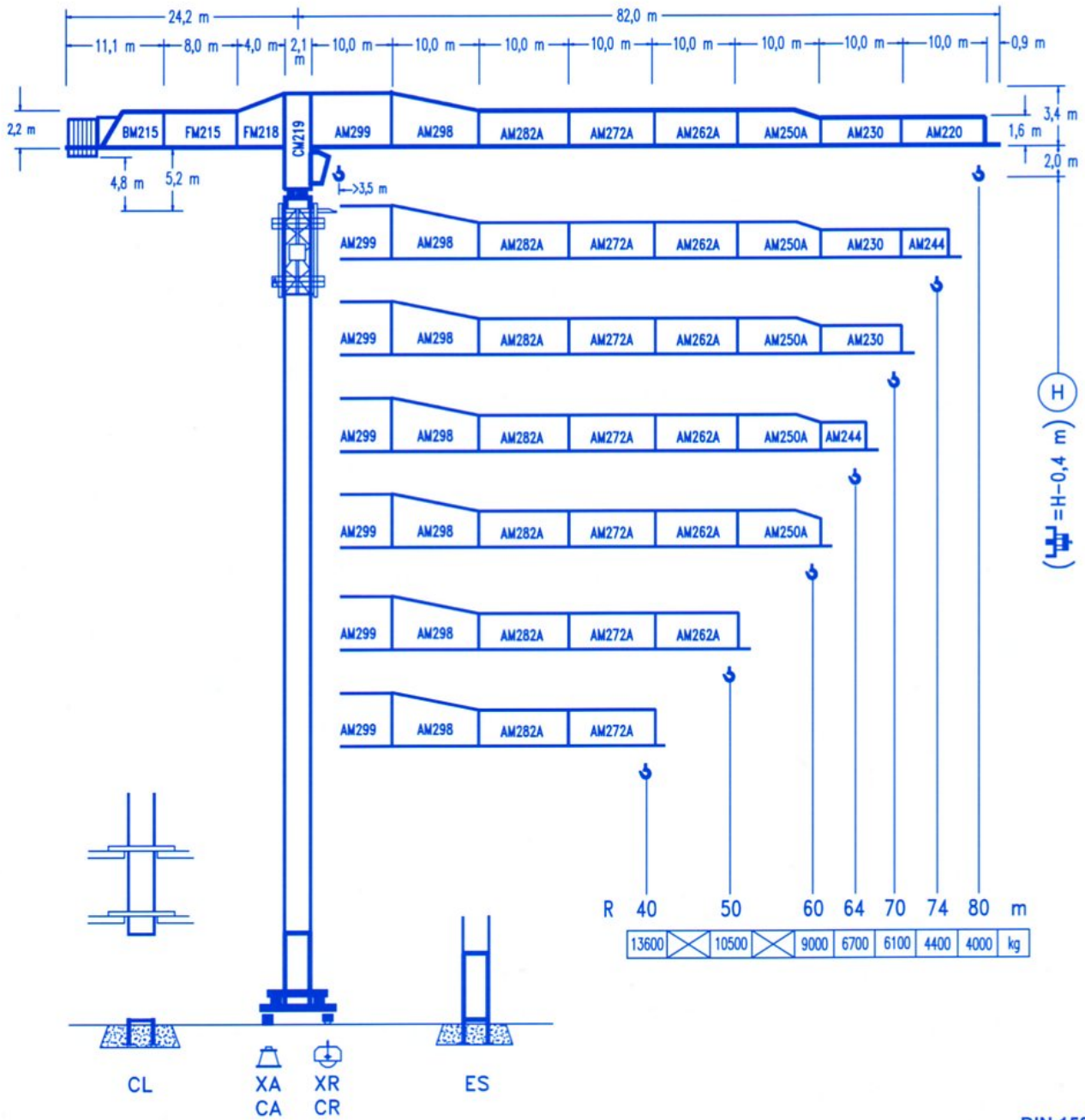


**COMANSA**

**LINDEN 2100**

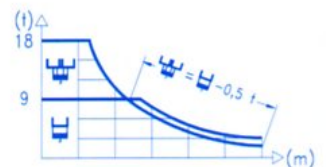
**21 LC 550**

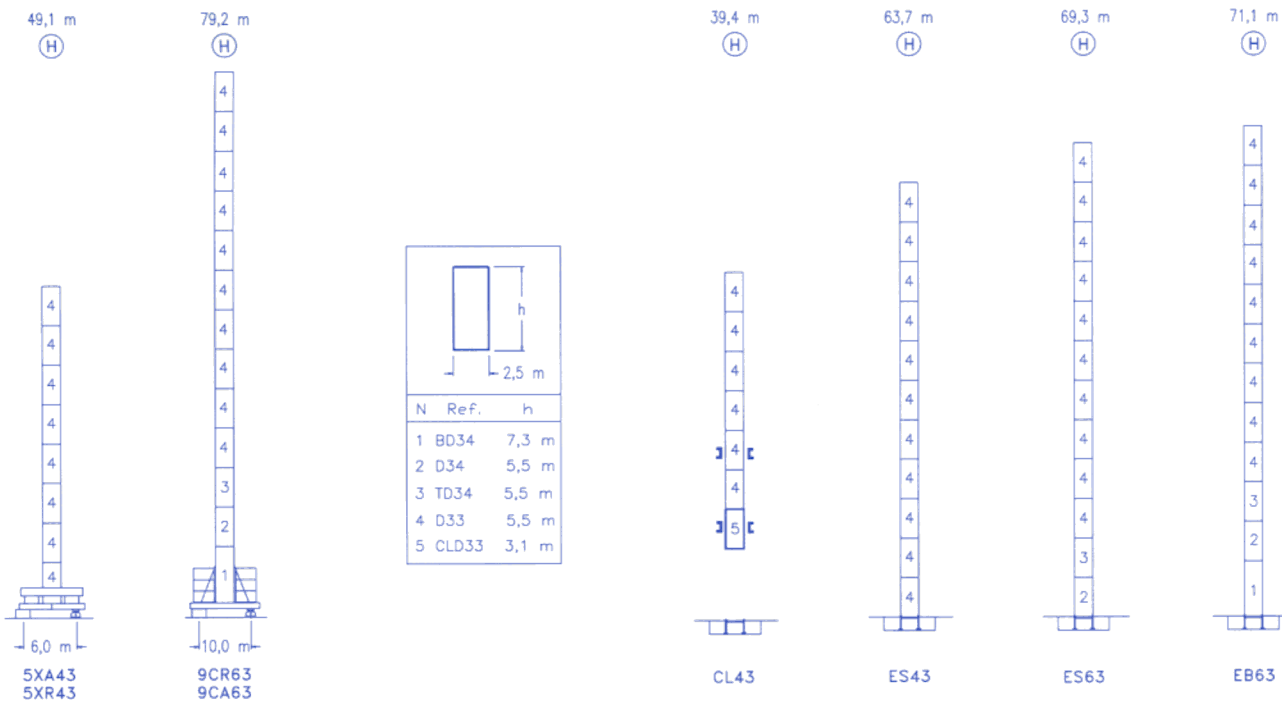
**18 t**



CE  
DIN 15018 H1 B3

R														
80	20,6	24	30	37,7	38,7	44	50	54	60	64	70	74	80	m
	18000	15175	11750	9000	9000	7825	6795	6240	5550	5160	4660	4375	4000	kg
74	20,6	24	30	37,7	38,9	44	50	54	60	64	70	74	m	
	18000	15170	11745	9000	9000	7865	6835	6275	5580	5190	4690	4400	kg	
70		25,6	30	34	40	46,9	49,1	54	60	64	70	m		
		18000	15035	13045	10830	9000	9000	8115	7230	6735	6100	kg		
64		25,3	30	34	40	46,5	48,9	54	60	64	m			
		18000	14885	12915	10720	9000	9000	8070	7195	6700	kg			
60			30,7	34	40	44	50	56,5	60	m				
			18000	16045	13370	12005	10375	9000	9000	kg				
50			30,6	34	40	44	50	m						
			18000	16000	13335	11970	10500	kg						
40			30,6	34	40	m								
			18000	16020	13600	kg								





<b>R. máx.</b>	En servicio In operation En service In Betrieb	<b>5XR43</b> ..... 150,0 t
		<b>9CR63</b> ..... 111,0 t

<b>R. máx.</b>	Fuera de servicio Out of service Hors service Ausser Betrieb	<b>5XR43</b> ..... 135,0 t
		<b>9CR63</b> ..... 143,0 t



**CFU-7.5**

**7,5 kW**

---

0 ⇄ 94 m/min



**GR-12**

**4 x 120 Nm**

---

0 ⇄ 0,7 rpm



**TRA-7.5**

**2 x 75 Nm**

---

0 ⇄ 20 m/min

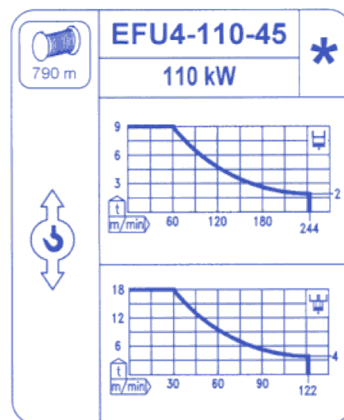
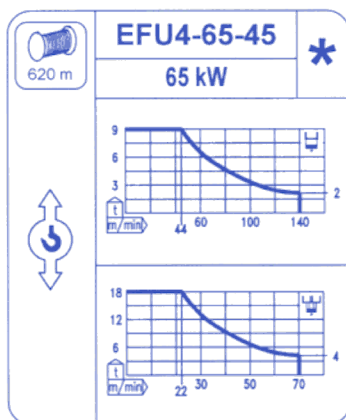
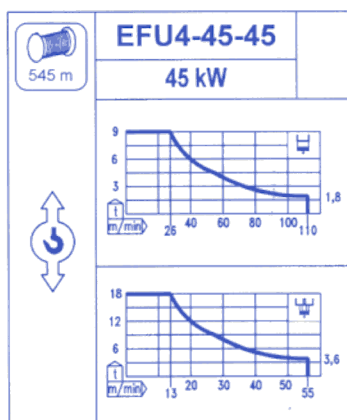


**TRA-7.5VC**

**2 x 75 Nm**

---

0 ⇄ 20 m/min



Tensión de alimentación Operating voltage Tension de service Betriebsspannung	<b>400 V</b> <b>3 ph</b> <b>50 Hz</b>
--	---

Opcional Optional En option Kaufoption	<b>*</b>
---	----------