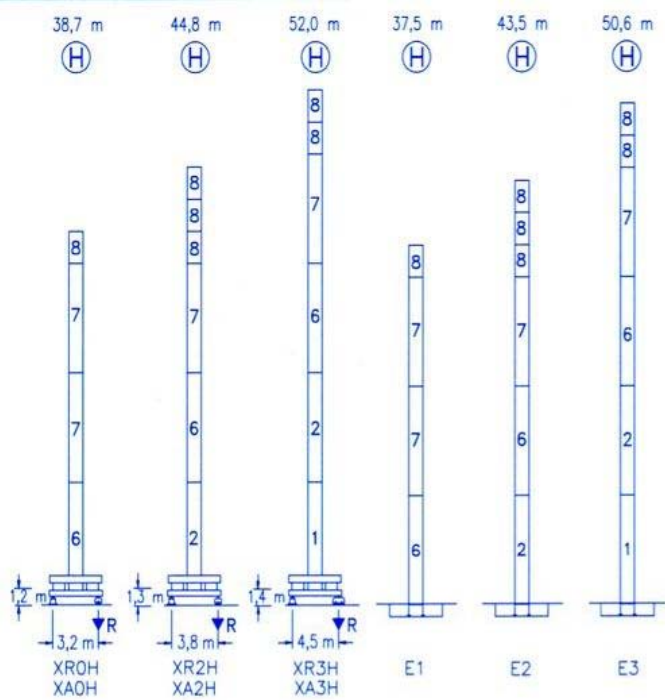


CE
DIN 15018 H1 B3

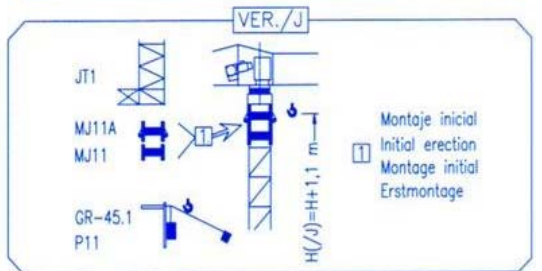
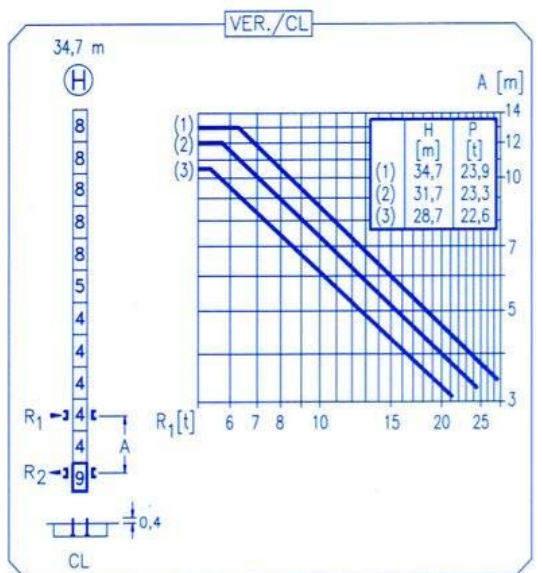
R	R(Cmax)	Cmax	20,0	22,5	25,0	27,5	30,0	32,5	35,0	m
35,0	19,5 m	2000	1950	1700	1500	1340	1210	1100	1000	kg
	10,6 m	4000	1870	1620	1420	1250	1110	1000	900	
32,5	19,6 m	2000	1950	1710	1510	1350	1210	1100	1000	kg
	10,6 m	4000	1880	1620	1420	1250	1120	1000	1000	
30,0	20,8 m	2000	2000	1820	1610	1440	1300	1200	1000	kg
	11,2 m	4000	2010	1740	1520	1340	1200	1000	1000	
27,5	21,5 m	2000	2000	1890	1680	1500	1400	1300	1200	kg
	11,5 m	4000	2080	1800	1580	1400	1300	1200	1200	
25,0	21,7 m	2000	2000	1920	1700	1500	1400	1300	1200	kg
	11,6 m	4000	2110	1820	1600	1500	1400	1300	1200	
22,5	21,5 m	2000	2000	1900	1700	1500	1400	1300	1200	kg
	11,5 m	4000	2080	1800	1600	1500	1400	1300	1200	
20,0	20,0 m	2000	2000	1900	1700	1500	1400	1300	1200	kg
	11,6 m	4000	2100	1800	1600	1500	1400	1300	1200	



N	Ref.	h
1	MT123	10,1 m
2	MH124A	11,8 m
4	MH121	3,0 m
5	MH121A	3,0 m
6	MH114A	11,8 m
7	MH114	11,8 m
8	MH111	3,0 m
9	CL20	2,2 m

MH114=(4)MH111-0,2 m

- H=H+0,2 m
- H=H
- H=H
- H=H-0,2 m



R. máx.	En servicio	XR0H 39,1 t
	In operation	XR2H 40,9 t
	En service	XR3H 43,0 t
	In Betrieb	

R. máx.	Fuera de servicio	XR0H 58,1 t
	Out of service	XR2H 65,4 t
	Hors service	XR3H 73,6 t
	Ausser Betrieb	

CS2-1.9
1,9 kW
16 m/min
48 m/min

CFU-2.2
2,2 kW
0 ⇄ 80 m/min

GR-6.5
65 Nm
0 ⇄ 0,8 rpm

TS2-3.0	TS2-4.5	TS2-5.5
2x30 Nm	2x45 Nm	2x55 Nm
0 ⇄ 20 m/min		
XR0H	XR2H	XR3H

ES3-13-10
13,2 kW

	I	II	III
m/min	7,5	30	60
kg	2000	2000	1100
m/min	3,7	15	30
kg	4000	4000	2200

ES3-18-10
18 kW

	I	II	III
m/min	10	38	76
kg	2000	2000	1100
m/min	5	19	38
kg	4000	4000	2200

EFU2-11-10
11 kW

EFU2-18-10
18 kW

Tensión de alimentación	400 V
Operating voltage	3 ph
Tension de service	50 Hz
Betriebsspannung	

Opcional
Optional
En option
Kaufoption
