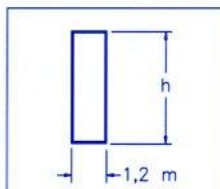
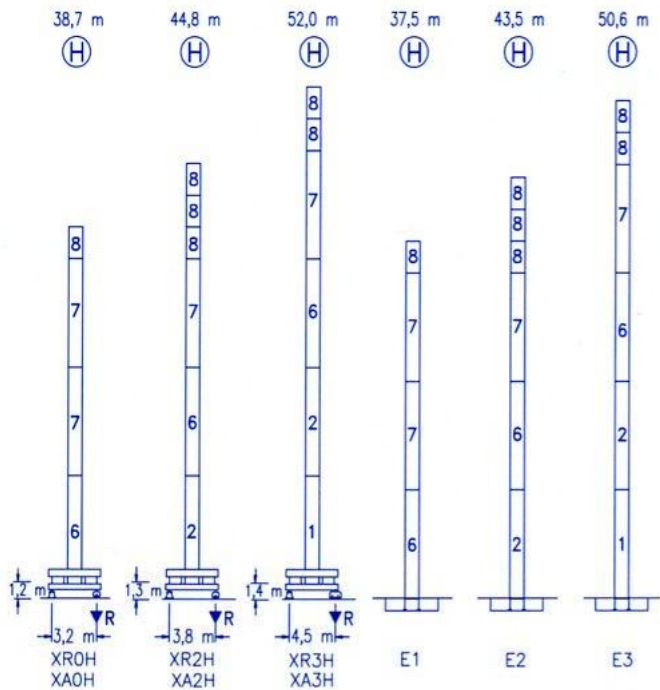
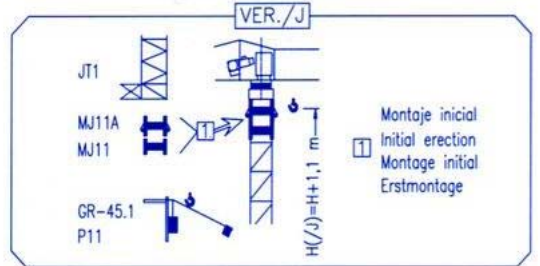
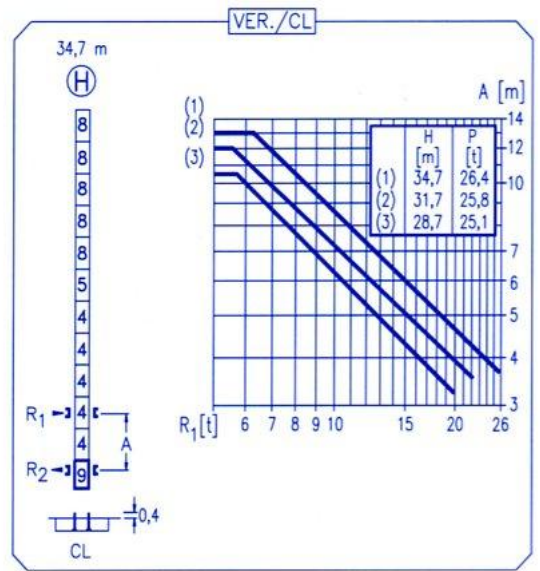
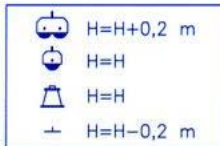


R	R(Cmax)	Cmax	20,0	22,5	25,0	27,5	30,0	32,5	35,0	37,5	40,0	m
40,0	22,3 m	2000	2000	1980	1750	1570	1420	1290	1180	1080	1000	kg
	12,0 m	4000	2200	1910	1680	1490	1330	1200	1080	990		
37,5	22,6 m	2000	2000	2000	1780	1590	1440	1310	1200	1100	kg	
	12,1 m	4000	2230	1930	1700	1510	1350	1210	1100	1000		
35,0	24,2 m	2000	2000	2000	1930	1730	1560	1420	1300	kg		
	12,9 m	4000	2410	2090	1840	1640	1470	1320	1200			
32,5	25,3 m	2000	2000	2000	1820	1650	1500	kg				
	13,5 m	4000	2540	2210	1940	1730	1550		1400			
30,0	24,7 m	2000	2000	2000	1970	1770	1600	kg				
	13,2 m	4000	2460	2140	1880	1670	1500					
27,5	24,5 m	2000	2000	2000	1950	1750	kg					
	13,0 m	4000	2430	2110	1860	1650						
25,0	25,0 m	2000	2000	2000	2000	kg						
	13,3 m	4000	2480	2160	1900							
22,5	22,5 m	2000	2000	2000	kg							
	13,2 m	4000	2470	2150								
20,0	20,0 m	2000	2000	kg								
	13,3 m	4000	2500									



N	Ref.	h
1	MT123	10,1 m
2	MH124A	11,8 m
4	MH121	3,0 m
5	MH121A	3,0 m
6	MH114A	11,8 m
7	MH114	11,8 m
8	MH111	3,0 m
9	CL20	2,2 m

MH114=(4)MH111-0,2 m



<b>R. máx.</b>	En servicio	XR0H ..... 40,4 t XR2H ..... 41,7 t XR3H ..... 44,8 t
	In operation	
	En service	
	In Betrieb	

<b>R. máx.</b>	Fuera de servicio	XR0H ..... 57,9 t XR2H ..... 65,5 t XR3H ..... 74,1 t
	Out of service	
	Hors service	
	Ausser Betrieb	

**CS2-1.9**  
1,9 kW  
16 m/min  
48 m/min

**CFU-2.2**  
2,2 kW  
0 ⇄ 80 m/min

**GR-6.5**  
65 Nm  
0 ⇄ 0,8 rpm

<b>TS2-3.0</b> 2x30 Nm	<b>TS2-4.5</b> 2x45 Nm	<b>TS2-5.5</b> 2x55 Nm
0 ⇄ 20 m/min		
<b>XR0H</b>	<b>XR2H</b>	<b>XR3H</b>

**ES3-13-10**  
13,2 kW

		I	II	III
m/min	7,5	30	60	
	kg	2000	2000	1100
m/min	3,7	15	30	
	kg	4000	4000	2200

**ES3-18-10**  
18 kW

		I	II	III
m/min	10	38	76	
	kg	2000	2000	1100
m/min	5	19	38	
	kg	4000	4000	2200

**EFU2-11-10**  
11 kW

**EFU2-18-10**  
18 kW

Tensión de alimentación	400 V
Operating voltage	3 ph
Tension de service	50 Hz
Betriebsspannung	

Opcional	*
Optional	
En option	
Kaufoption	



**GRUAS Y MAQUINARIA, S.A. (GRUYMSA)**

C/SEVERO OCHOA, 10 POLIGONO INDUSTRIAL  
28860 - PARACUELLOS DE JARAMA (MADRID)  
TLF.: 91 658 09 15 - FAX: 91 658 05 97  
www.gruymsa.com