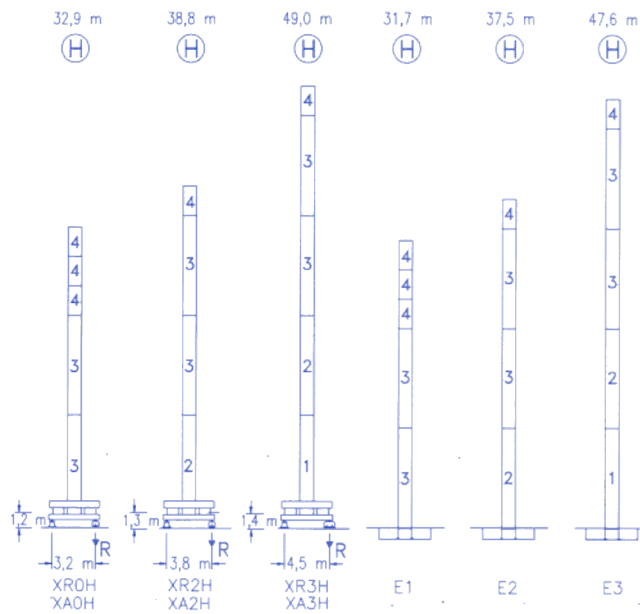


CE
DIN 15018 H1 B3

R	R(Cmax)	Cmax	20,0	22,5	25,0	27,5	30,0	32,5	35,0	37,5	40,0	42,5	45,0	47,5	50,0	m	kg
50,0	22,8 m	2500	2500	2500	2250	2020	1830	1670	1530	1410	1310	1220	1140	1070	1000	20,0	1000
	12,2 m	5000	2850	2480	2190	1950	1760	1590	1450	1330	1220	1120	1040	970	900		
47,5	23,4 m	2500	2500	2500	2320	2090	1890	1720	1580	1460	1350	1260	1170	1100	1000	22,5	1000
	12,5 m	5000	2930	2550	2250	2010	1810	1640	1490	1370	1260	1160	1080	1000			
45,0	23,8 m	2500	2500	2500	2370	2130	1930	1760	1610	1490	1380	1280	1200			25,0	1000
	12,7 m	5000	2980	2600	2300	2050	1840	1670	1520	1400	1280	1190	1100				
42,5	27,1 m	2500	2500	2500	2460	2230	2040	1880	1730	1610	1500					27,5	1000
	14,4 m	5000	3450	3010	2660	2380	2150	1950	1780	1640	1510	1400					
40,0	27,0 m	2500	2500	2500	2450	2220	2030	1860	1720	1600						20,0	1000
	14,3 m	5000	3420	2990	2640	2370	2130	1940	1770	1630	1500						
37,5	27,3 m	2500	2500	2500	2480	2250	2060	1890	1750							22,5	1000
	14,5 m	5000	3470	3030	2680	2400	2160	1970	1800	1650							
35,0	28,7 m	2500	2500	2500	2500	2380	2170	2000								25,0	1000
	15,1 m	5000	3650	3190	2830	2530	2280	2080	1900								
32,5	29,0 m	2500	2500	2500	2500	2410	2200									27,5	1000
	15,3 m	5000	3690	3230	2860	2560	2310	2100									
30,0	29,5 m	2500	2500	2500	2500	2450	2240									20,0	1000
	15,5 m	5000	3750	3280	2910	2600	2350										

Summary Table:

R	27,5	25,0	22,5	20,0	Cmax	R(Cmax)
2500	3750	3300	2900	2600	2350	2100
2500	3300	2900	2600	2350	2100	1900



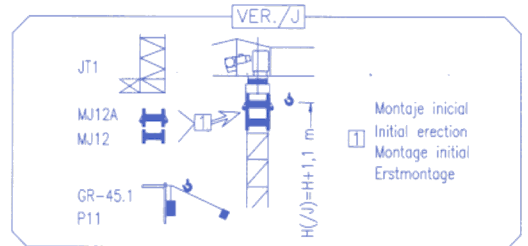
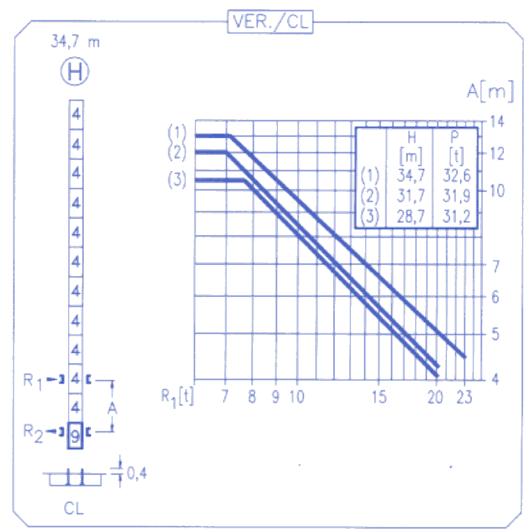
h

1,2 m

N Ref.	h
1 MT123	10,1 m
2 MH124A	11,8 m
3 MH124	11,8 m
4 MH121	3,0 m
9 CL20	2,2 m

MH124=(4)MH121-0,2 m

- H=H+0,2 m
- H=H
- H=H
- H=H-0,2 m



R. máx.	En servicio In operation En service In Betrieb	XR0H 44,6 t
		XR2H 42,6 t
		XR3H 49,2 t

R. máx.	Fuera de servicio Out of service Hors service Ausser Betrieb	XR0H 47,7 t
		XR2H 56,4 t
		XR3H 76,8 t

CS2-1.9

1,9 kW

16 m/min
48 m/min

CFU-2.2

2,2 kW

0 ⇄ 80 m/min

GR-9.0

90 Nm

0 ⇄ 0,8 rpm

TS2-3.0	TS2-4.5	TS2-5.5
2x30 Nm	2x45 Nm	2x55 Nm
0 ⇄ 20 m/min		
XR0H	XR2H	XR3H

250 m

ES3-18-12

18 kW

	I	II	III
m/min	8	32	64
kg	2500	2500	1300
m/min	4	16	32
kg	5000	5000	2600

250 m

ES3-13-12

13,2 kW

	I	II	III
m/min	6	24	48
kg	2500	2500	1300
m/min	3	12	24
kg	5000	5000	2600

250 m

EFU2-18-12

18 kW

m/min

kg

250 m

EFU2-11-12

11 kW

m/min

kg

Tensión de alimentación Operating voltage Tension de service Betriebsspannung	400 V 3 ph 50 Hz
--	------------------------

Opcional
Optional
En option
Kaufoption

*